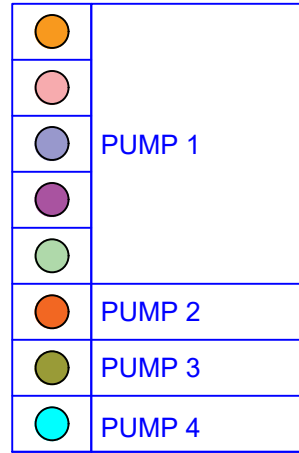
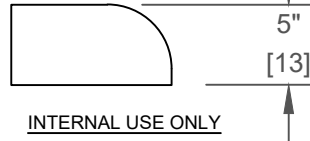
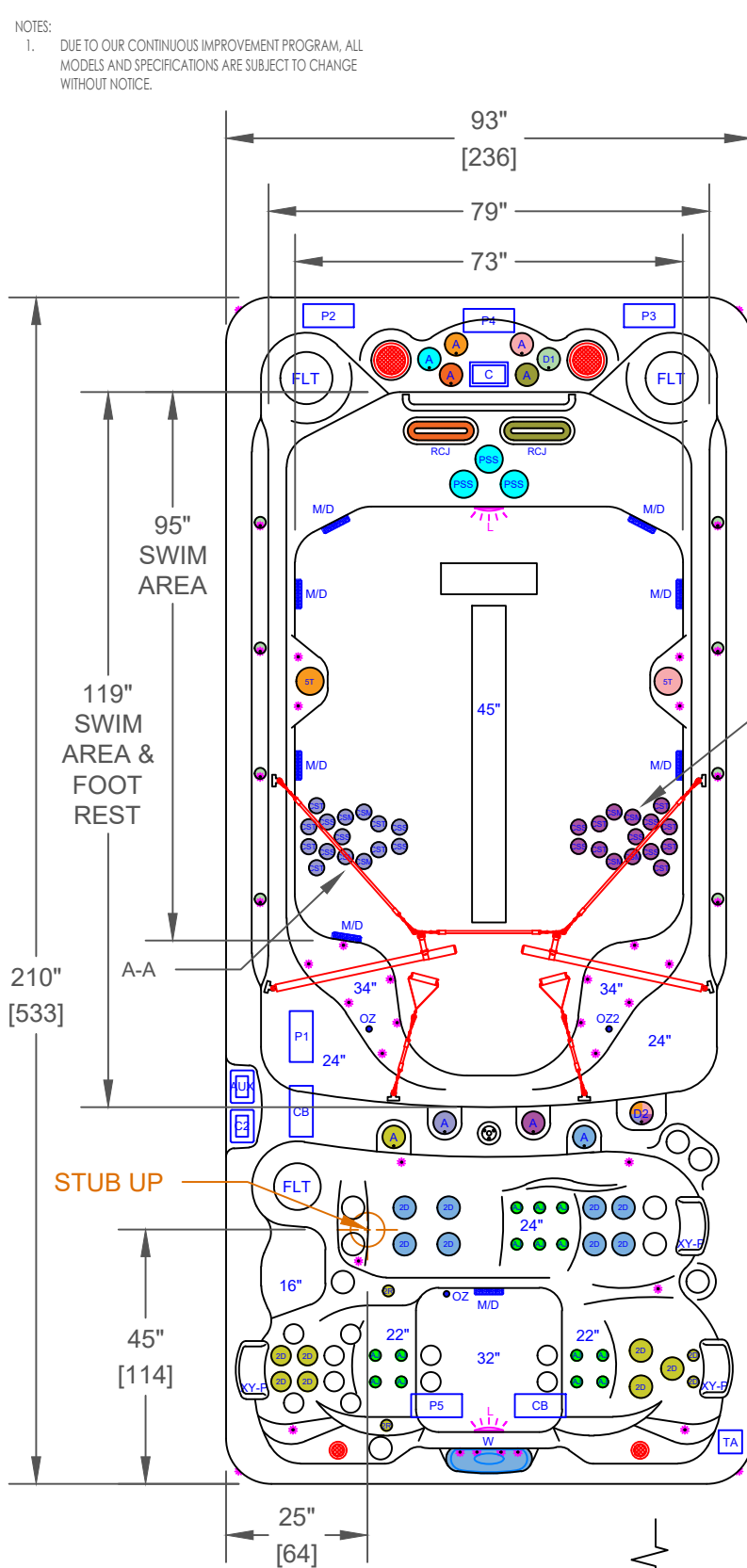


NOTES:
 1. DUE TO OUR CONTINUOUS IMPROVEMENT PROGRAM, ALL MODELS AND SPECIFICATIONS ARE SUBJECT TO CHANGE WITHOUT NOTICE.

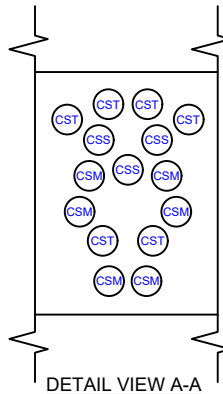


| | |
|--|-------------|
| | PUMP 1 |
| | PUMP 2 |
| | PUMP 3 |
| | PUMP 4 |
| | PUMP 5 |
| | CONTROL BOX |
| | TURBO AIR |

| F-1868DZ - LEGEND | | | |
|-------------------|---|--------------------|------|
| SYMB. | DESCRIPTION | PART NUMBER | QTY. |
| 2D | 2" CLUSTER STORM DIRECTIONAL VELOCITY | PLUCS2441009S-CDCL | 17 |
| 2R | 2" CLUSTER STORM TWIN VELOCITY | PLUCS2441029S-CDCL | 2 |
| 5T | 5" ADJUSTABLE WHIRLPOOL VELOCITY WITH VALVE | PLUCS2394009S-CDCL | 2 |
| CST | CLUSTER STORM AIR MAX TRI-STREAM | PLU239-8918S-HLG | 12 |
| CSS | CLUSTER STORM AIR MAX SOLO-STREAM | PLU239-8908S-HLG | 10 |
| CSM | CLUSTER STORM AIR MAX MULTI-STREAM | PLU239-8928S-HLG | 8 |
| RCJ | RIP CURRENT JETS | PLU210-5168S-DSG | 2 |
| PSS | POWER STREAM JETS | PLU210-0821S | 3 |
| D2 | VELOCITY 2" WATER DIVERTER VALVE | PLUCS6053309-CDCL | 1 |
| A | VELOCITY AIR CONTROL VALVE | PLUCS86603709-CDCL | 9 |
| W | LED WATERFALL | | 1 |
| - | 27" STAINLESS STEEL HANDRAIL | | 1 |
| FLT | 50 SQ. FT. BIO-CLEAN FILTER WITH TELEWEIR | PLU510-9559-CDCL | 3 |
| M/D | MAIN DRAIN | PLU644-5219-CDCL V | 8 |
| TH | TETHER ANCHOR | | 1 |
| EA | FITNESS ANCHOR | | 6 |
| XY-P | TEXTURED Y-PILLOW | | 3 |
| C | CAL SPAS TOUCH 4 WITH TOUCH 1 AUXILIARY | | 1 |
| C2 | CAL SPAS TOUCH 1 SQUARE | | 1 |
| - | LED DUAL HYDRO-STREAMERS PLUS™ WITH D1.5 VALVE | | 1 |
| | BEAM-LITE 4X CABINET CORNER LED LIGHTING | | 1 |
| L | 5" MULTI COLORED LED LIGHT | | 2 |
| | PERIMETER UNDERWATER LED LIGHTING PACKAGE | | 1 |
| OZ | PURE SILK OZONATOR WITH MAZZIE INJECTOR AND MIXING CHAMBER | | 1 |
| OZ2 | TWIN PURE SILK™ DUAL OZONATOR WITH MAZZIE INJECTORS AND MIXING CHAMBERS | | 1 |
| AJ | AIR JET | | 14 |

STUB UP

| OPTIONS | | |
|---------|---|-----------------|
| SYMB. | DESCRIPTION | OPTION NUMBER |
| - | PURE CURE UV PURIFICATION SYSTEM | OPT23-191B |
| - | PREMIUM HORIZONTAL CABINET PANELS COLOR: TEAK, WEATHERED WHITE | OPT23-E982C-2 |
| - | CAL GRIP DECKING (FLOOR & STEPS) | OPT23-CG1868DZ |
| - | CAL CONNECT RF MODULE | OPT23-168RF |
| | FREEDOM SOUND SYSTEM BLUETOOTH, POWERED SUBWOOFER AND 4X SPEAKERS (2X 3" BLACK 2X 6" WHITE) | OPT23-FS622 |
| - | THERMO-GUARD FULL FOAM (THIS OPTION ILL REPLACE THERMO LAYER) | OPT23-900-XL-6A |



| | | | |
|--|---------------------|---|------------------------|
| PROPRIETARY AND CONFIDENTIAL THE INFORMATION CONTAINED IN THIS DRAWING IS THE SOLE PROPERTY OF CAL SPAS. ANY REPRODUCTION IN PART OR AS A WHOLE WITHOUT THE WRITTEN PERMISSION OF CAL SPAS IS PROHIBITED. | | CAL SPAS INC. 1462 EAST NINTH STREET, POMONA, CA 91766 | |
| SPECIFICATIONS | | TITLE | JET LAYOUT - STD |
| DIMENSION (in) | 93"x210"x51" | LINE | SWIM PRO X-SERIES |
| DIMENSION (cm) | 236x533x130 | MODEL | 2024 SPA LINE OLYMPIAN |
| DRY WEIGHT | 2950 LBS [1338 Kg] | NUM | F-1868DZ |
| FILLED WEIGHT | 21984 LBS [9972 Kg] | DWG NO. | CS003087 |
| WATER CAP. | 2285 GAL [8650 L] | REV | A |
| SCALE NTS | | SHEET 1 OF 1 | |