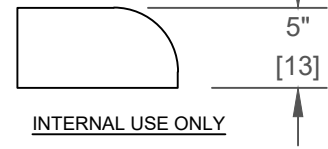
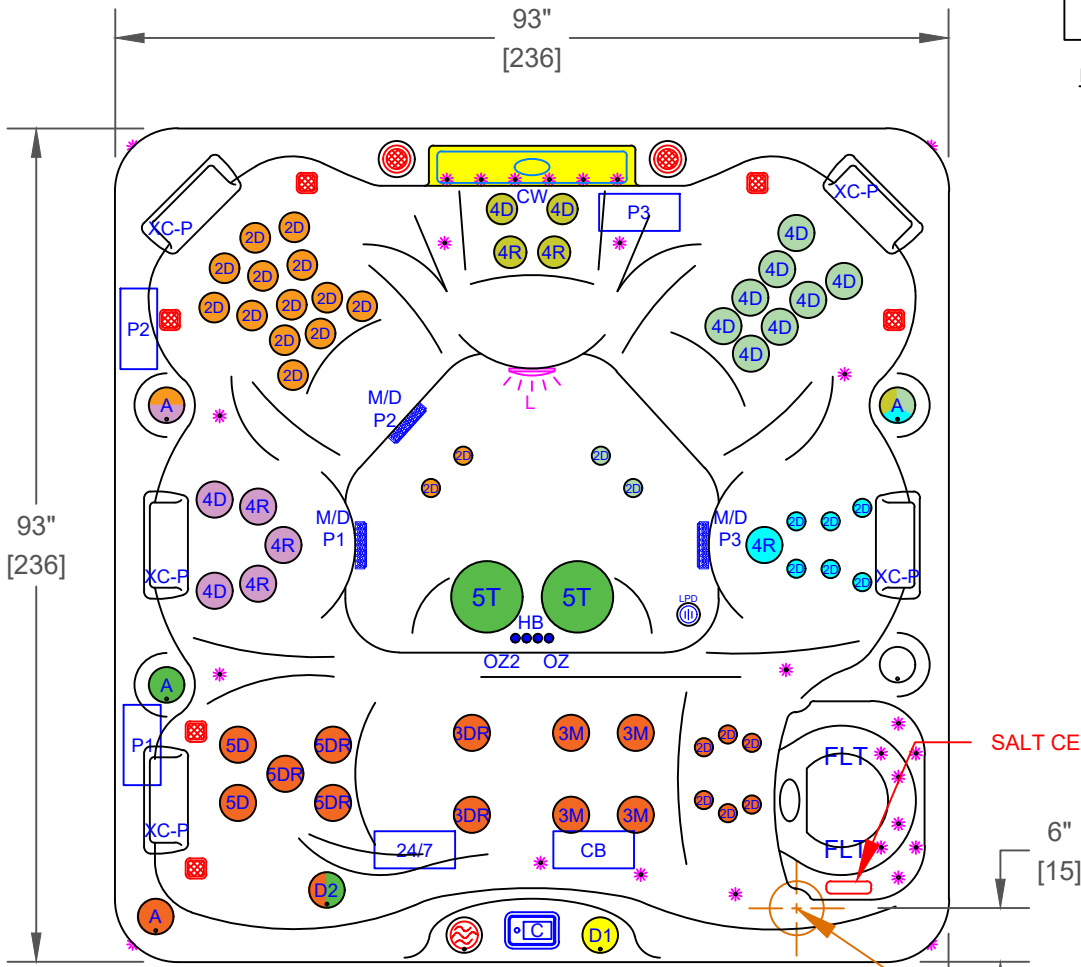


NOTES:
 1. DUE TO OUR CONTINUOUS IMPROVEMENT PROGRAM, ALL MODELS AND SPECIFICATIONS ARE SUBJECT TO CHANGE WITHOUT NOTICE.



	PUMP 1
	PUMP 2
	PUMP 3
	PUMP 1
	PUMP 2
	PUMP 3
	PUMP 24/7
	CONTROL BOX

PL-860L - LEGEND

SYMB.	DESCRIPTION	PART NUMBER	QTY.
2D	2" CLUSTER STORM DIRECTIONAL VELOCITY	PLUCS2441009S-CDCL	29
3M	3" MINI STORM MULTI MASSAGE	PLUCS2442059S-CDCL	4
3DR	3" MINI STORM TWISTER VELOCITY	PLUCS2442009SS-CDCL	2
4D	4" POLY STORM DIRECTIONAL VELOCITY	PLUCS2443009SS-CDCL	12
4R	4" POLY STORM ROTO VELOCITY	CS2443039SSCDHL	6
5D	5" POWER STORM DIRECTIONAL VELOCITY	PLUCS2441009SS-CDCL	2
5DR	500 VELOCITY DOUBLE ROTO	PLU29950-032-400	3
5T	5" ADJUSTABLE WHIRLPOOL VELOCITY WITH VALVE	PLUCS2394009S-CDCL	2
D1	VELOCITY 1" WATER DIVERTER VALVE	PLUCS6054309-CDCL	1
D2	VELOCITY 2" WATER DIVERTER VALVE (UNDERWATER)	PLUCS6053509-CDCL	1
A	VELOCITY AIR CONTROL VALVE	PLUCS6603709-CDCL	4
CW	20" CASCADE LED WATERFALL		1
FLT	150 SQ. FT. SGMS ULTRA SKIM FILTERS (2X 75 SQ. FT.)	FIL517-4619LC-DSG	2
M/D	MAIN DRAIN	PLU644-5219-CDCL V	3
XC-P	TEXTURED CASCADE PILLOW		5
C	TOUCH CONTROL+ 1000		1
OZ2	TWIN PURE SILK SYSTEM DIAL OZONATORS WITH MAZZIE INJECTORS AND MIXING CHAMBERS		1
	ELITE II SPOT LIGHT 4X CABINET CORNER LED LIGHTING		1
L	5" MULTI COLORED LED LIGHT		1
	PERIMETER LED LIGHTING		1
P1, P2, P3	HIGH PERFORMANCE PUMP 6.0 BHP		3
24/7	24/7 FILTRATION SYSTEM		1
CB	CONTROL BOX WHISPER HOT™ HEATING SYSTEM		1
-	FILTER LID PLATINUM		1
-	CAL GRIP DECKING (FLOOR & STEPS)		1
-	PURE CURE UV PURIFICATION SYSTEM		1
LPD	LOW PROFILE DRAIN		1

OPTIONS

SYMB.	DESCRIPTION	OPTION NUMBER
	CAL SPAS SALT SYSTEM	OPT24-113S
	FREEDOM SOUND SYSTEM BLUETOOTH, POWERED SUBWOOFER AND 6X SPEAKERS (N/A WITH OPT24-S22)	OPT24-FS62
	SOUND SYSTEM BLUETOOTH, AND 2X SPEAKERS	OPT24-S22
-	THERMO-GUARD FULL FOAM	OPT24-900
-	ABS MOLDED BOTTOM TRAY	OPT24-990-8

<small>PROPRIETARY AND CONFIDENTIAL</small> THE INFORMATION CONTAINED IN THIS DRAWING IS THE SOLE PROPERTY OF CAL SPAS. ANY REPRODUCTION IN PART OR AS A WHOLE WITHOUT THE WRITTEN PERMISSION OF CAL SPAS IS PROHIBITED.		 CAL SPAS INC. 1462 EAST NINTH STREET, POMONA, CA 91766	
SPECIFICATIONS		TITLE	JET LAYOUT - 113S
DIMENSION (in)	93"x93"x40-1/2"	LINE	PLATINUM
DIMENSION (cm)	236x236x100	MODEL	2024 SPA LINE LA JOLLA
DRY WEIGHT	900 LBS [408 Kg]	NUM	PL-860L
FILLED WEIGHT	4650 LBS [2109 Kg]	DWG NO.	CS003162
		REV	B
WATER CAP.	450 GAL [1703 L]	SCALE	NTS
			SHEET 1 OF 1