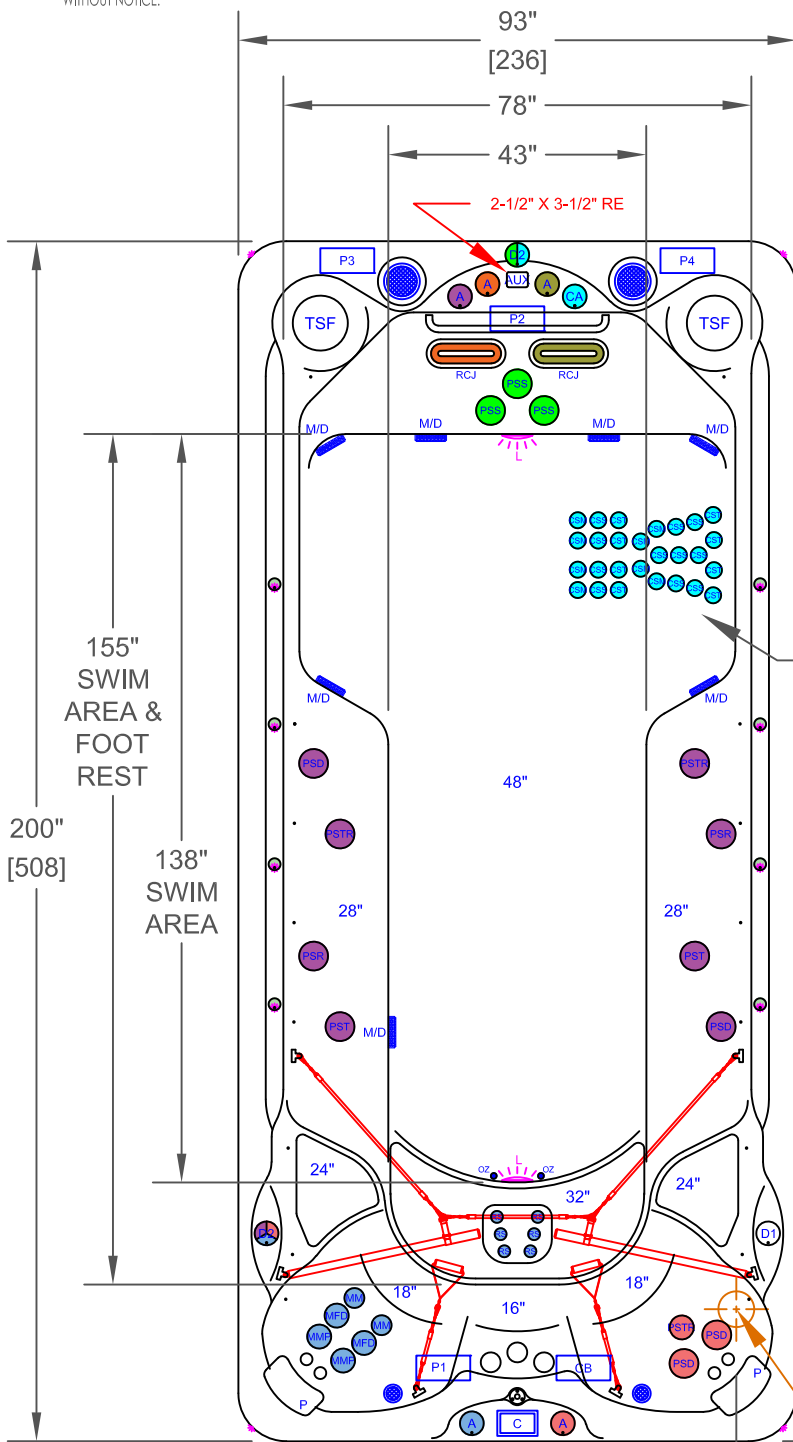


NOTES:
 1. DUE TO OUR CONTINUOUS IMPROVEMENT PROGRAM, ALL MODELS AND SPECIFICATIONS ARE SUBJECT TO CHANGE WITHOUT NOTICE.

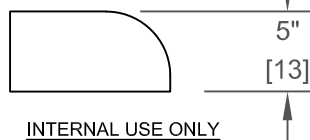
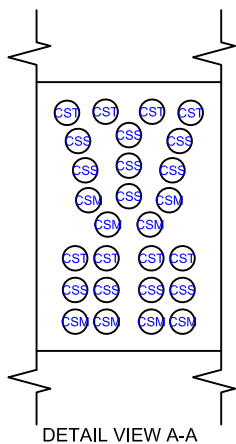


	PUMP 1
	PUMP 2
	PUMP 3

	PUMP 4
	PUMP 1
	PUMP 2
	PUMP 3
	PUMP 4
	CONTROL BOX

CS-F-1681 - LEGEND

SYMB.	DESCRIPTION	PART NUMBER	QTY.
MM	MINI-STORM TWIN ROTO-BLACK	PLUCS2442041S-CBL	2
MMP	MINI MULTI-MASSAGE BLACK	PLUCS2442051S-CBL	2
MFD	MICRO FLOW DIRECTIONAL BLACK	PLUCS2442001SS-CBL	2
PSD	POWER STORM DIRECTIONAL BLACK	PLUCS2444001SS-CBL	4
PSR	POWER STORM RIFFLED-BLACK	PLUCS2444011S-CBL	2
PST	PWR STORM WAGON WHEEL-BLACK	PLUCS2444031SS-CBL	2
PSTR	POWER STORM TWIN ROTO JET BLACK	PLUCS2444051S-CBL	3
CST	CLUSTER STORM AIR MAX TRI-STREAM	PLU239-8918S-MTB	8
CSS	CLUSTER STORM AIR MAX SOLO-STREAM	PLU239-8908S-MTB	11
CSM	CLUSTER STORM AIR MAX MULTI-STREAM	PLU239-8928S-MTB	8
CA	CLUSTER AIR CONTROL VALVE	PLU25059-213-000	1
RCJ	RIP CURRENT JETS	PLU210-5168S-DSG	2
PSS	POWER STREAM JETS	PLU210-0821S	3
D1	VELOCITY 1" WATER DIVERTER VALVE (UNDERWATER)	PLUCS6054301-CBL	1
D2	VELOCITY 2" WATER DIVERTER VALVE	PLUCS6053301-CBL	2
A	VELOCITY AIR CONTROL VALVE	PLUCS6630701-CBL	6
-	27" STAINLESS STEEL HANDRAIL		1
F	100 SQ.FT. 2X50 SQ.FT. W/TELEWEIR		2
M/D	MAIN DRAIN		7
TH	TETHER ANCHOR		1
EA	FITNESS ANCHOR		6
P	Y-PILLOWS		2
C	CAL SPAS TOUCH 4		2
OZ	PURE SILK™ OZONATOR WITH MAZZIE INJECTOR AND MIXING CHAMBER		1
-	LED DUAL HYDRO-STREAMERS PLUS™ WITH VALVE		1
	BEAM-LITE 4X CABINET CORNER LED LIGHTING		1
L	MULTI COLORED LED LIGHT		2
	FREEDOM SOUND SYSTEM BLUETOOTH, POWERED SUBWOOFER AND 4X SPEAKERS 2X 6" 2X 2"		1
-	CAL GRIP COLLECTION SERIES INCLUDING STEP GRIP		1



PROPRIETARY AND CONFIDENTIAL THE INFORMATION CONTAINED IN THIS DRAWING IS THE SOLE PROPERTY OF CAL SPAS. ANY REPRODUCTION IN PART OR AS A WHOLE WITHOUT THE WRITTEN PERMISSION OF CAL SPAS IS PROHIBITED.		 CAL SPAS INC. 1462 EAST NINTH STREET, POMONA, CA 91766	
SPECIFICATIONS		TITLE	JET LAYOUT - STD
DIMENSION (in)	93"x200"x55"	LINE	SWIM-PRO
DIMENSION (cm)	236x508x140	MODEL	2023 SPA LINE COMMANDER
DRY WEIGHT	2850 LBS [1293 Kg]	NUM	CS-F-1681
FILLED WEIGHT	23700 LBS [10750 Kg]	DWG NO.	CS000XXX
		REV	B
WATER CAP.	2500 GAL [9463 L]	SCALE	NTS
			SHEET 1 OF 1