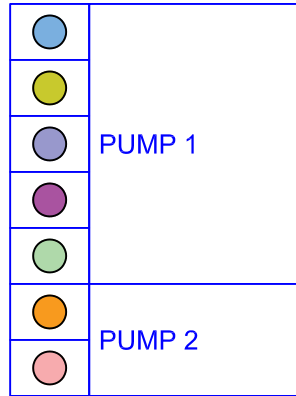
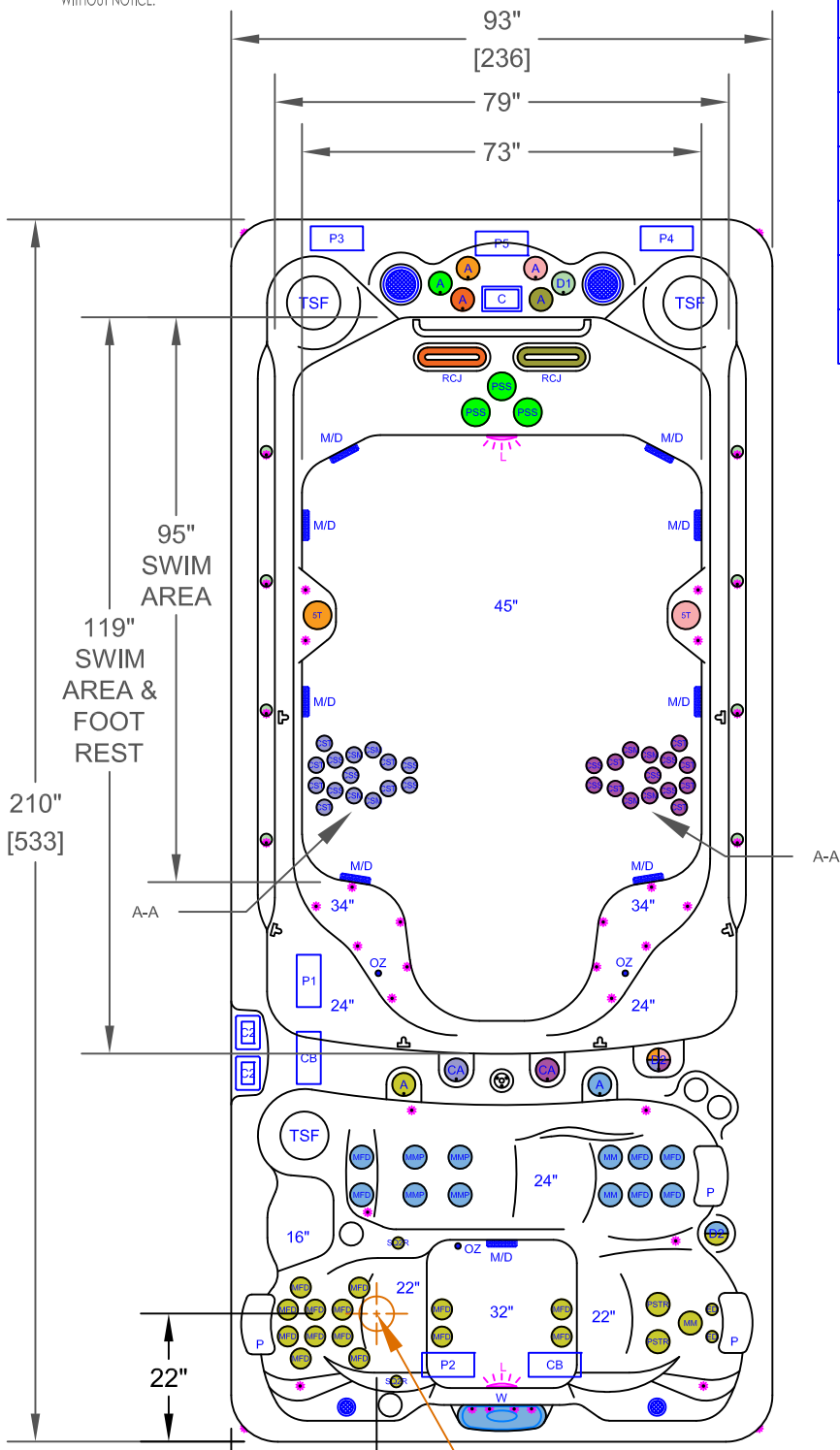


NOTES:

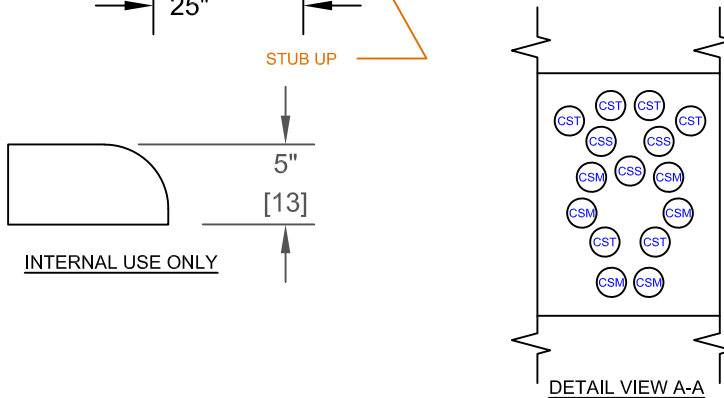
1. DUE TO OUR CONTINUOUS IMPROVEMENT PROGRAM, ALL MODELS AND SPECIFICATIONS ARE SUBJECT TO CHANGE WITHOUT NOTICE.



	PUMP 3
	PUMP 4
	PUMP 1
	PUMP 2
	PUMP 3
	PUMP 4
	PUMP 5
	CONTROL BOX

CS-F-1896DZ - LEGEND

SYMB.	DESCRIPTION	PART NUMBER	QTY.
ED	EURO DIRECTIONAL BLACK	PLUCS2441001S-CBL	2
SQZR	ROTO/HAND JET	PLU29923-024-000	2
MM	MINI STORM TWIN ROTO BLACK	PLUCS2442041S-CBL	3
MMP	MINI MULTI MASSAGE BLACK	PLUCS2442051S-CBL	4
MFD	MICRO FLOW DIRECTIONAL BLACK	PLUCS2442001SS-CBL	20
PSTR	PWR STORM TWIN ROTO BLACK	PLUCS2295181S	2
ST	5" DOME JET WITH VALVE	PLUCS2394001S-CBL	2
CST	CLUSTER STORM AIR MAX TRI-STREAM	PLU239-8918S-MTB	12
CSS	CLUSTER STORM AIR MAX SOLO-STREAM	PLU239-8908S-MTB	10
CSM	CLUSTER STORM AIR MAX MULTI-STREAM	PLU239-8928S-MTB	8
CA	CLUSTER AIR CONTROL VALVE	PLU25059-213-000	2
RCJ	RIP CURRENT JETS	PLU210-5168S-DSG	2
PSS	POWER STREAM JETS	PLU210-0821S	3
D1	VELOCITY 1" WATER DIVERTER VALVE (UNDERWATER)	PLUCS6054301-CBL	1
D2	VELOCITY 2" WATER DIVERTER VALVE	PLUCS6053301-CBL	2
A	VELOCITY AIR CONTROL VALVE	PLUCS6630701-CBL	7
W	LED WATERFALL		1
-	2" STAINLESS STEEL HANDRAIL		1
F	100 SQ.FT. 2X50 SQ.FT. W/TELEWEIR		3
M/D	MAIN DRAIN		10
TH	TETHER ANCHOR		1
EA	FITNESS ANCHOR		6
P	Y-PILLOWS		3
C	CAL SPAS TOUCH 4		1
C2	CAL SPAS TOUCH 1 SQUARE		2
-	LED DUAL HYDRO-STREAMERS PLUS™ WITH VALVE		1
	BEAM-LITE 4X CABINET CORNER LED LIGHTING		1
L	MULTI COLORED LED LIGHT		2
	FREEDOM SOUND SYSTEM BLUETOOTH, POWERED SUBWOOFER AND 4X SPEAKERS 2X 6" 2X 2"		1
OZ	PURE SILK OZONATOR WITH MAZZIE INJECTOR AND MIXING CHAMBER		3
-	CAL GRIP COLLECTION SERIES INCLUDING STEP GRIP		1



PROPRIETARY AND CONFIDENTIAL THE INFORMATION CONTAINED IN THIS DRAWING IS THE SOLE PROPERTY OF CAL SPAS. ANY REPRODUCTION IN PART OR AS A WHOLE WITHOUT THE WRITTEN PERMISSION OF CAL SPAS IS PROHIBITED.		 CAL SPAS INC. 1402 EAST NINTH STREET, POMONA, CA 91766	
SPECIFICATIONS		TITLE	JET LAYOUT - STD
DIMENSION (in)	93"x210"x55"	LINE	SWIM-PRO
DIMENSION (cm)	236x533x140	MODEL	2023 SPA LINE COMMANDER
DRY WEIGHT	2950 LBS [1338 Kg]	NUM	CS-F-1896DZ
FILLED WEIGHT	24910 LBS [11293 Kg]	DWG NO.	CS000XXX
WATER CAP.		SCALE	NTS
		REV	B
		SHEET 1 OF 1	