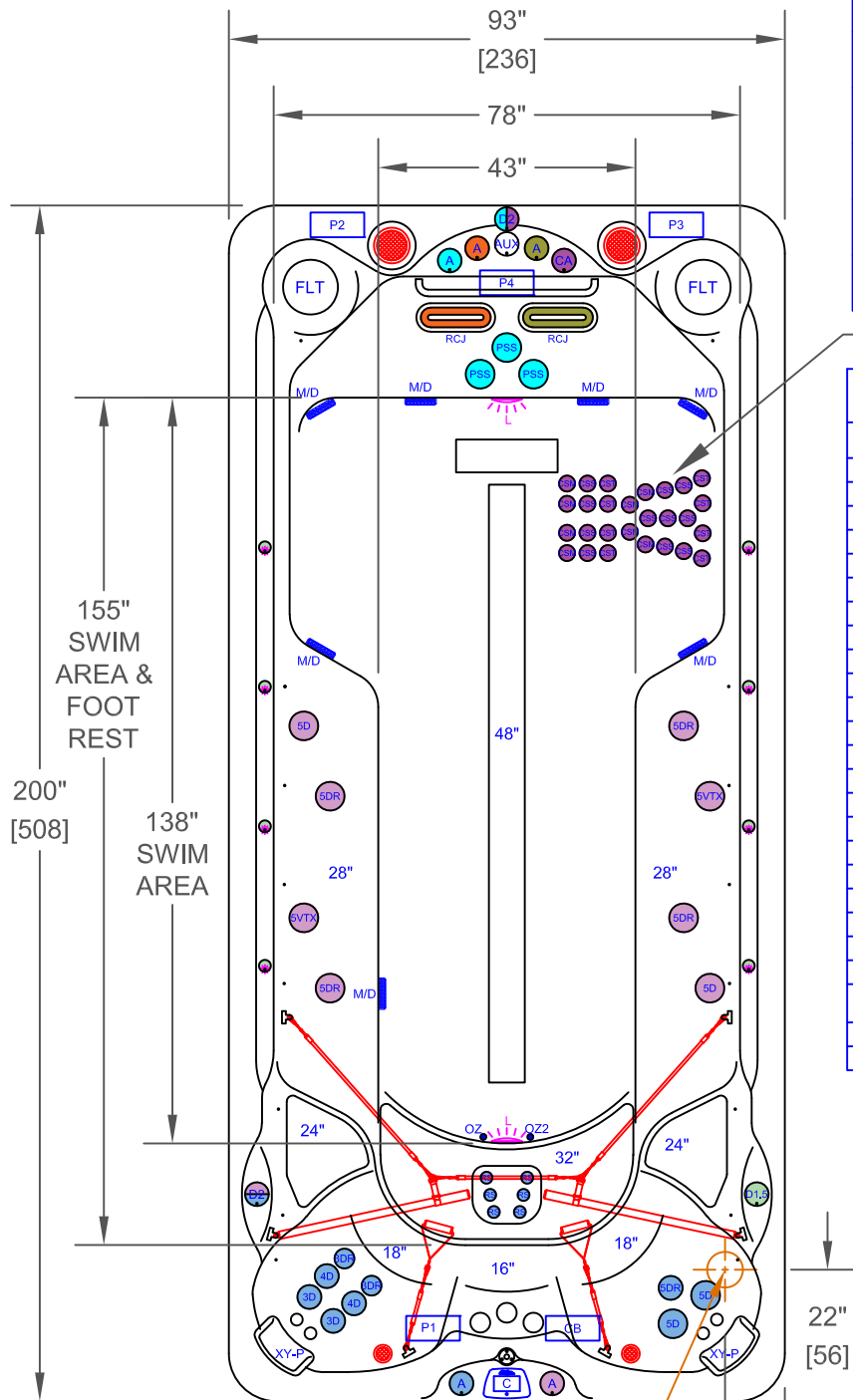


NOTES:

1. DUE TO OUR CONTINUOUS IMPROVEMENT PROGRAM, ALL MODELS AND SPECIFICATIONS ARE SUBJECT TO CHANGE WITHOUT NOTICE.



	PUMP 1
	PUMP 2
	PUMP 3
	PUMP 4
	PUMP 4

P1	PUMP 1
P2	PUMP 2
P3	PUMP 3
P4	PUMP 4
CB	CONTROL BOX

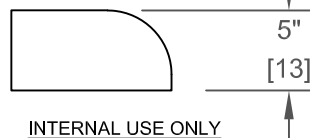
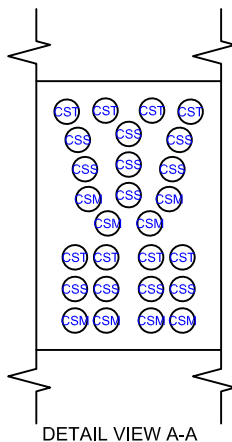
A-A

F-1655 - LEGEND

SYMB.	DESCRIPTION	PART NUMBER	QTY.
RS	RAIN JET STRAIGHT	PLU23028-292-00	6
3D	300 VELOCITY DIRECTIONAL	PLU29930-112-400	2
3DR	300 VELOCITY DOUBLE ROTO	PLU29930-191-400	2
4D	400 VELOCITY DIRECTIONAL	PLU29940-112-400	2
5D	500 VELOCITY DIRECTIONAL	PLU29950-012-400	4
5DR	500 VELOCITY DOUBLE ROTO	PLU29950-032-400	5
5VTX	500 VELOCITY VTX	PLU29950-011-400	2
CST	CLUSTER STORM AIR MAX TRI-STREAM	PLU239-8918S-MTB	8
CSS	CLUSTER STORM AIR MAX SOLO-STREAM	PLU239-8908S-MTB	11
CSM	CLUSTER STORM AIR MAX MULTI-STREAM	PLU239-8928S-MTB	8
CA	CLUSTER AIR CONTROL VALVE	PLU25059-213-000	1
RCJ	RIP CURRENT JETS	PLU210-5168S-DSG	2
PSS	POWER STREAM JETS	PLU210-0821S	3
D2	VELOCITY 2" WATER DIVERTER VALVE		2
A	VELOCITY AIR CONTROL VALVE		6
-	27" STAINLESS STEEL HANDRAIL		1
FLT	50 SQ. FT. BIO-CLEAN FILTER WITH TELEWEIR		2
M/D	MAIN DRAIN		7
TH	TETHER ANCHOR		1
EA	FITNESS ANCHOR		6
XY-P	TEXTURED Y-PILLOW		2
C	CAL SPAS TOUCH 2 WITH AUXILIARY PANEL		1
OZ2	TWIN PURE SILK™ DUAL OZONATOR WITH MAZZIE INJECTORS AND MIXING CHAMBERS		1
-	LED DUAL HYDRO-STREAMERS PLUS™ WITH D1.5 VALVE		1
L	5" MULTI COLORED LED LIGHT		1

OPTIONS

SYMB.	DESCRIPTION	OPTION NUMBER
-	PURE CURE UV PURIFICATION SYSTEM	OPT23-191B
-	CAL CONNECT RF MODULE	OPT23-168RF
	FREEDOM SOUND SYSTEM BLUETOOTH, POWERED SUBWOOFER AND 4X SPEAKERS (2X 3" 2X 6")	OPT23-FS622
-	THERMO-GUARD FULL FOAM	OPT23-900



<small>PROPRIETARY AND CONFIDENTIAL</small> THE INFORMATION CONTAINED IN THIS DRAWING IS THE SOLE PROPERTY OF CAL SPAS. ANY REPRODUCTION IN PART OR AS A WHOLE WITHOUT THE WRITTEN PERMISSION OF CAL SPAS IS PROHIBITED.		 CAL SPAS INC. 1462 EAST NINTH STREET, POMONA, CA 91766	
SPECIFICATIONS		TITLE	JET LAYOUT - STD
DIMENSION (in)	93"x200"x51"	LINE	SWIM-PRO
DIMENSION (cm)	236x508x130	MODEL	2023 SPA LINE COMMANDER
DRY WEIGHT	2850 LBS [1293 Kg]	NUM	F-1655
FILLED WEIGHT	23700 LBS [10750 Kg]	DWG NO.	CS000866
WATER CAP.	2500 GAL [9463 L]	REV	C
SCALE NTS		SHEET 1 OF 1	